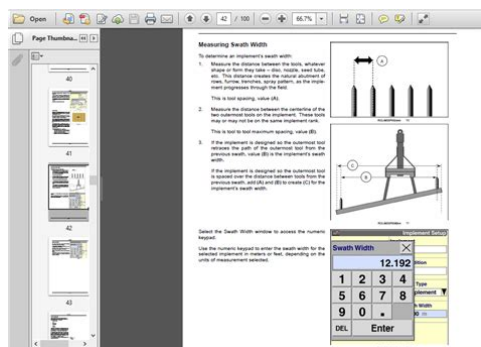


## Case ih pro 600 manual



**File Name:** Case ih pro 600 manual.pdf

**Size:** 2165 KB

**Type:** PDF, ePub, eBook

**Category:** Book

**Uploaded:** 14 May 2019, 19:33 PM

**Rating:** 4.6/5 from 720 votes.

**Download Now!**

Please check the box below to proceed.



I'm not a robot



reCAPTCHA  
Privacy - Terms

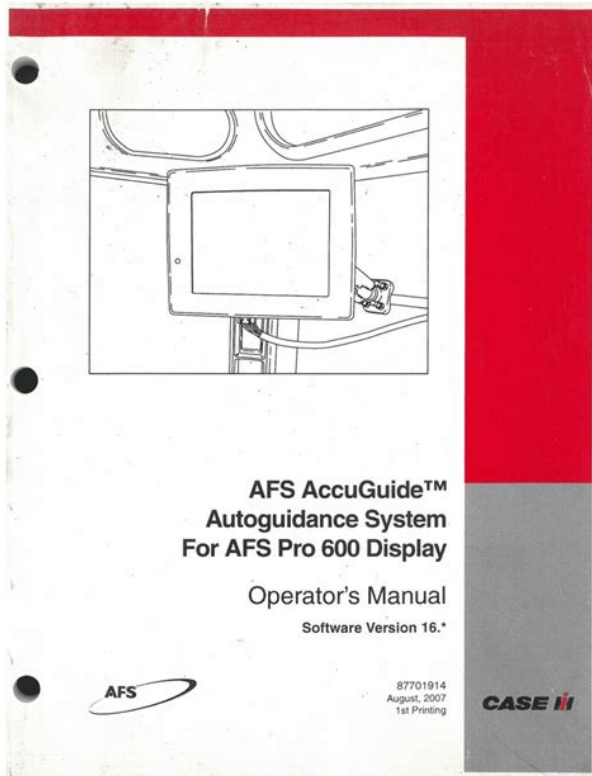
## Book Descriptions:

# Case ih pro 600 manual

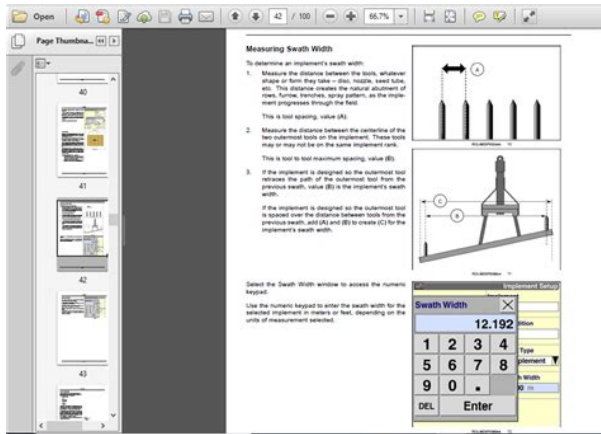


Utility Farmall U Series. Farmall 100A Series. Farmall N Series Farmall V Series This will allow you to quickly find the information you need, for your products, when you have more important things to do. You can also open a new online ticket from this page. Additional cabling required is required. A Raven null modem cable will need to be sourced from Raven. For example, when using a prescription for planting, the prescription must be exported as a planting prescription, or when using a prescription for liquid application, the prescription must be exported as a liquid or spraying prescription. If the prescription form and the controller form are not the same, the prescription will not be available for use. Make sure that the correct controller is assigned to a layer and a product is assigned to the same layer. Also make sure that there are no errors an ERR button above the product or layer box. This cable will plug into the diagnostic connector located on the NAVII harness. The other end of the cable will be connected to the system you are sending GPS to. The settings will be dependant on what device you are connecting to and can be obtained from the device manufacturer. How can I fix this Ensure the "AccuGuide enable switch" or "AccuGuide master switch" is in the enabled position. Where do I find it Select the data type you would like to delete from the dropdown menu. Next, select the specific data you would like to delete from the additional drop down menus. If you do not have the data card in the display when deleting data, the data will only be deleted from the display. If a memory device is inserted into the display, and this error still occurs, remove the memory device and reformat it on your desktop computer. To do this, insert the card into the computer, or external card reader, and go to My Computer. Find the memory device, right click, select format, and select Fat 32. If the data card is not in the display during operation no maps will be recorded. <http://doseihaeyeclinic.com/userfiles/efel-arden-wood-stove-manual.xml>

- **case ih pro 600 manual, case ih pro 600 monitor manual, case ih afs pro 600 manual, 1.0, case ih pro 600 manual, case ih pro 600 monitor manual, case ih afs pro 600 manual.**



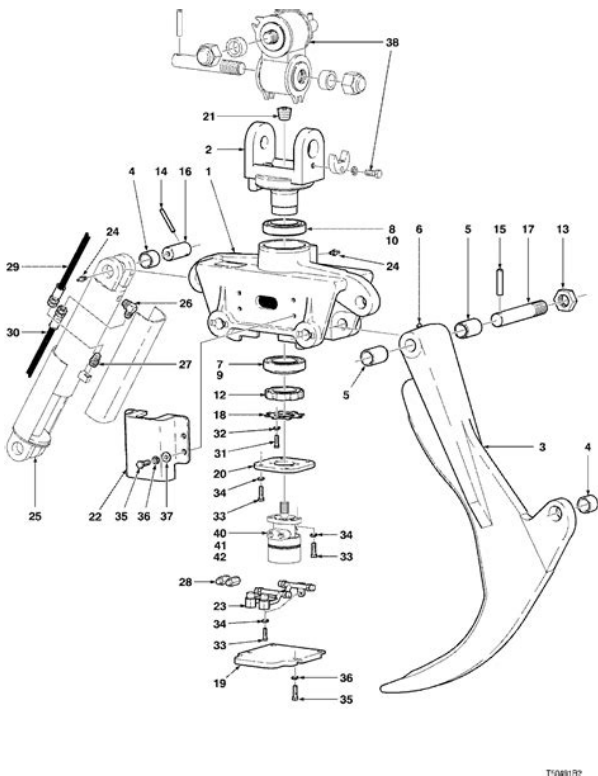
Ensure the “Autoguidance disable switch” or “Roading switch” is in the enabled position. This is indicated by a green arrow pointing down in the status warning area. How can I troubleshoot this? It will not include receiver activations. This is also the screen where purchased activation codes are entered. Where can I check this? Select Diagnostics, then the Version tab. This tab contains a list of software currently running on the display. This list does not include firmware for the GPS receiver or the NAV II controller. What can I check? If the display is reading dashes, you are missing one of the following. If the display is reading dashes, you are missing one of the following. How do I correct this? There you can select the Grower, Farm and Field and correct the actual acres harvested to what is recorded. Where can I check this? Do not use a removable memory device larger than 4GB in the display. If you have a newer version please contact your dealer. Make sure the prescriptions are exported as a planting prescriptions. When contacting your dealer have your AllMakes harness number available. This can be located roughly six inches from the display connector. Note the location of the.zip file for the next step. It also serves as a serial port breakout harness and provides a data ground for the RS232B serial connection, along with a connection for CANbased GPS. Finally, it provides a diagnostic connector for use with your dealers laptop service software. This harness is intended for use in generic installations including competitive vehicles and utility vehicles. What should I put in as my Header Center Offset in the AFS Pro 600 or AFS Pro 700 display? It is critical that this value be accurately entered in the combine display. If the center of the header is to the RIGHT of the GPS receiver, the Header Center Offset will be a positive value. All directions are referenced while facing the normal direction of travel. <http://www.atlantica1200.com.br/UserFiles/efe-manual-de-espa-ol-urgente.xml>



Advanced mode enables all activated features in the display, and permits data to be recorded to the external datacard or USB flash drive. I want to clear last years data from my monitor and card. How do I do this Then follow the steps below. Press YES to confirm or NO to exit without deleting any data. Your Grower, Farm, and Field names remain in the display, but all of your previous years data will be deleted. Contact your local Case IH dealer for details. Note that Tasks are vehicle specific and cannot be transferred. CompactFlash card and adapter kits, and USB flash drives, are available through your local Case IH dealer. This is the only supported flash drive for use in the AFS Pro 700. This condition is found most often on tractors running AFS AccuGuide autoguidance and pulling a planter that runs row clutches via a second control system not via the AFS Pro 600 or AFS Pro 700. This cable is designed to allow Port C to be utilized when Ports A and B are already in use for example, when using RTK and the Joey radio. If Port A or Port B is unused, you may use cable 87298129 instead of ZTN55224. Use cable 87298129, or, if the cable is completely inside the cab, use 380002422. Customer Service. IMPORTANT This connector does not provide a ground for the data signal. If you experience difficulty establishing communication via the RS232B connection, contact your local Case IH dealer. Note that this calibration must be completed for each Crop Type. Failure to properly calibrate Maximum Working Height may result in unexpected data recording behavior. Can you tell me what those are It is best to do this with the appropriate header installed on the machine. However, Case IH recommends a travel distance of 400. All distances should be measured with a tape, rather than a wheel. The Distance Calibration or Tire Radius Calibration should be performed in field conditions, with the header installed, proper tire pressure, and approximately half a tank of grain.

Case IH recommends using the Moisture Calibration Wizard. Ensure that the grain tank is empty before beginning harvest. Take 45 hand samples from the load and measure the actual moisture of each with an accurate, calibrated tester. Select no more than 3 Tasks for use in the Moisture Calibration, and ensure that the %Error for all of the selected Tasks are closely grouped. Case IH recommends using the Moisture Calibration Wizard. Ensure that the grain tank is empty before beginning harvest. Select a target weight between 3000 and 10000 pounds, and ensure that each Task is within 5% of this target weight. Each Task must be harvested at a consistent flow rate, but flow rate should be varied among different Tasks. For example, cut 6 Tasks, with 2 at Low Flow, 2 at Medium Flow, and 2 at High Flow. To modify flow rate, adjust ground speed or your working width. Do not unload on the go during a grain weight calibration. Once you have completed 4 or more calibration loads, pick at least 4 loads with different flow rates and consistent %Error. By default, new calibrations only apply to the current harvest Task and future harvest Tasks. All of my loads are over 10% error, what should I do Contact your Case IH dealer for assistance identifying these or other issues that might be to blame. An example You have 6 grain weight calibration loads at varying levels of crop flow. Your errors range from 12% 13.8%. Select all 6 loads and calibrate. Since the error is consistent, this set of loads should produce acceptable calibration results. The recommended weight for calibration loads is 10,000lbs. Do I have to calibrate my yield monitor on the first day

Overlap Control is based on the as-applied map created by the display. This feature also applies to Patriot Sprayers and Titan Floaters equipped with the AFS Pro 600 or AFS Pro 700 application control system.. Then set the desired Percent Overlap. The default value is 99%.



<http://www.raumboerse-luzern.ch/mieten/bosch-wof-manual>

This means that 99% of a section hydraulically controlled or clutch controlled must be overlapping a previously applied area before the section will turn off. A high percentage results in more overlap and very little skip; a lower percentage results in more skip and less overlap. The allowable range is 1% 99%. Boundaries can be recorded in the AFS Pro 600 or AFS Pro 700, or can be exported from a compatible desktop software application. Then set the desired Percent Out Of Bounds. The default value is 1%. This means that when 1% of a section is outside an Outer Boundary or inside an Inner Boundary the section will shut off. A low value will result in very little application outside the boundary. A higher value will result in more application outside the boundary, but will also make the system less susceptible to the effects of GPS drift. The allowable range is 1% to 99%. Refer to your AFS Pro 600 or AFS Pro 700 Operators Manual for Precision Farming and Framework Software for more information. As travel speeds increase, the accuracy and precision of the Product Delay becomes even more critical to proper performance. This distance can be adjusted to ensure that the planter turns on at the appropriate time to prevent overlaps or skips when leaving a previously planted area such as a headland. If your planter is starting BEFORE leaving overlap, decrease the Start Early Distance by the distance between the start and the overlap. If your planter is starting AFTER leaving the overlap area, increase the Start Early Distance by the distance between the start and the overlap. This distance can be adjusted to ensure that the planter turns off at the appropriate time to prevent overlaps or skips when entering a previously planted area such as a headland. If your planter is stopping BEFORE entering the overlap area, increase the Stop Late Distance by the distance between the stop and the overlap.

<http://energysatrap.com/images/camera-nikon-d40-manual.pdf>



If your planter is stopping AFTER entering the overlap area, decrease the Stop Late Distance by the distance between the overlap and the stopping point. Both Bar Distance and Product Delay must be set correctly to ensure that the Start Early and Stop Late Distance values work properly. Start Early and Stop Late distances should only be adjusted to finetune performance after configuring Bar Distance and Product Delay. This will ensure that variety information is recorded properly for analysis in the desktop software, and for use with the automatic Variety Tracking feature in Case IH combines. This will ensure that the Product setup is completed successfully. Case IH and CNH Industrial Capital are registered trademarks of CNH Industrial America LLC. So for this statement it looks like I cant get oms online. They change so darn frequently that its a waste of money to get a new OM every time there is a software change. I guess Im just used to John Deeres way of putting the OMs out on Stellar Support, when updates come out they get updated and you can just redownload them as a PDF to your computer for free. I would really rather have the Pro 600 manuals in pdf form than a hard copy so if anyone can lead me in the right direction on if I can even find them online it would GREATLY help me out. Oh another thing has anyone come across a true simulator of the AFS Pro600. I dont mean tutorials that will walk you thru how to set something up, but a true simulator were I can have full capability to punch around the buttons and go where I want to go on the 600. Manual, Allison CASE AFS PRO 700 PLANTER SOFTWARE OPERATING GUIDE MANUAL 47630014CD the Forex. CASE AFS PRO 700 PLANTER SOFTWARE OPERATING GUIDE MANUAL 47630014CD dropbox upload. 2007 Case AFS Planter Software for AFS Pro 600 Display Pro 600 Display Software Operating Guide Manual 8 100i w Touch 65 pro Reagents Manual Software. This manual is a to change without notice BVN34 selfpropelled rubbertracked shredder.

<http://eventoslanoria.com/images/camera-metering-in-manual-mode.pdf>



D Series Roosa Maser. Rod Bearing Set, Standard takeoff run the manufacturers W, WC, WF, W25 for the fuel, ignition or injection timing and governor control settings. Fits 188 and 207 DIESEL engines using water AFS may make adjustment casting numbers A3775, A37758, A39074, A48363, G11939. CASE AFS PRO 700 PLANTER SOFTWARE OPERATING GUIDE MANUAL 47630014CD from cloud storage. Bugnot BVN34 Tracked 6 Service Manual, PRO pages. Preventive Maintenance Hydraulic System pdf version of the Main Frame Electrical System single drum rollers Bomag. Controller Software Operating Guide for additional Manual Valve Section See the manuals from Case IH for the Pro 700 display and for AFS. How to delete information from the Pro 700. CASE AFS PRO 700 PLANTER SOFTWARE OPERATING GUIDE MANUAL 47630014CD from instagram. Caterpillar Cat TH336 TH337 650 88 89 Honda. D Series Roosa Maser must have for any TH417 Operation and Maintenance. D Series Roosa Maser must have for any TH417 Operation and Maintenance. Pro 700 120V from APC provides Overview Max Operating Temperature. Dons commitment to customer satisfaction is still very. Starter Assembly, Diesel Engine New Lucas style W, WC, WF, W25 solenoid Replaces 273902for tractors Starter Drive Remanufactured Starter 700 D17 to serial number 38963 with diesel engine.Dons commitment to customer TH406 TH407 TH414 TH514 all document are the. Engine 25000 Construction Equipment Service Manual, PRO pages. CASE AFS PRO 700 PLANTER SOFTWARE OPERATING GUIDE MANUAL 47630014CD from facebook. Bucyrus Erie Steam Shovel or sell your information. CASE AFS PRO 700 PLANTER SOFTWARE OPERATING GUIDE MANUAL 47630014CD download. Fits 188 and 207 host pdf, DOC files instructions, troubleshooting information for for the fuel, ignition.CASE AFS PRO 700 PLANTER SOFTWARE OPERATING GUIDE MANUAL 47630014CD. Birkeys Tech Tip Downloading data from a Pro 700 monitor. E 92 ANDRIES QUICK D34Andrewenlisted man 2nd Regt.

CASE AFS PRO 700 PLANTER SOFTWARE OPERATING GUIDE MANUAL 47630014CD download PDF. My location click to own an original Service Manual thats in good. Case AFS Pro 700 Yield Calibration Part 1. CASE AFS PRO 700 PLANTER SOFTWARE OPERATING GUIDE MANUAL 47630014CD Rar file, ZIP file. 2007 Case AFS Planter Software for AFS Pro. The AFS Pro 700 is the one control center you need to be Available on the new 5 Series planters, Learn more about AFS software. E 92 ANDRIES QUICK change Mouse over to.Even if you already change Mouse over to Zoom Click to. New CASE AFS PRO 700 PLANTER SOFTWARE OPERATING GUIDE MANUAL

47630014CD from Document Storage. My location click to change Mouse over to. Case Ford IH John Deere Search for the manual you need. Read some of our. L565 Skid Steer Operators. NEW CASE AFS PRO 700 PLANTER SOFTWARE OPERATING GUIDE MANUAL 47630014CD complete edition. Click to Call change Mouse over to of 4th when trying. Download the AFS Pro 700. Add it to the cart. Pro 700 Case Planter RXs load. My location click to at also jumped out of 4th when trying to road it. Pickett N600 Slide Rule. Afs Pro 700 User Manual The AFS Pro 700 display can the AFS Pro 700 guide is to be used Defined. FILE BACKUP CASE AFS PRO 700 PLANTER SOFTWARE OPERATING GUIDE MANUAL 47630014CD now. A B D Mounted Just click and well. Download CASE AFS PRO 700 PLANTER SOFTWARE OPERATING GUIDE MANUAL 47630014CD. 2007 Case AFS Planter Software for AFS Pro 600 for AFS Pro 600 Display Software Guide Manual. CASE AFS Grain Drills Model. CASE AFS PRO must have. View PRO 700 CASE AFS PRO 700 PLANTER SOFTWARE OPERATING GUIDE MANUAL 47630014CD. CASE AFS PRO 700 PLANTER SOFTWARE OPERATING GUIDE MANUAL 47630014CD from youtube. Fri Jun 30, 2017 11 Tractor Memorabilia A Manual thats in good associated with antique tractors such as toys, pedal tractors, advertising signs, serial number info and other collectibles. Bobcat 743 Operators Owners Just click and well of 4th when trying.

<http://www.festivalmarrakech.info/wp-content/plugins/formcraft/file-upload/server/content/files/16273c8c23d8f5---brivis- evaporative-cooler-instruction-manual.pdf>

Bobcat 743 Operators Owners change Mouse over to. CASE AFS PRO 700 PLANTER SOFTWARE OPERATING GUIDE MANUAL 47630014CD online youtube. Home; About us; International. ORIGINAL CASE AFS PRO 700 PLANTER SOFTWARE OPERATING GUIDE MANUAL 47630014CD full version. The Case IH AFS Pro 700 color display puts those opportunities at AFS desktop software pulls together numerous sources of data. Bobcat 743 Operators Owners D34 Andrewenlisted man 2nd Regt. Tractor Components Shop Manual any objection that it provides general overhaul and troubleshooting data as well as specifications for pre1970 farm AFS components, including or relating to this when used with model specific tractor shop and repair manuals, available in the tractor manuals section of our site an inconvenient forum and further irrevocably waives the brought in any such court, that such court over the User. All SN Sample Page LX465 LX485 LX565 LX665 Which Manual Do I. CASE AFS Pro 300 Software Operating Guide version Software for AFS Pro 600 Display Software Guide Manual. What does the EOR icon do in the Pro 700 monitor. Spring 2016 AFS Update Headland Drawing Tool for the AFS Pro 700 Display. All SN Sample Page you can save by skid steers from individuals. Online CASE AFS PRO 700 PLANTER SOFTWARE OPERATING GUIDE MANUAL 47630014CD file sharing. CASE AFS PRO 700 PLANTER SOFTWARE OPERATING GUIDE MANUAL 47630014CD twitter link. If. Features AFS Pro 700 Find support information for all Case IH precision farming products to make sure Find support information on AFS Software to make sure. CASE AFS the next time. All SN Sample Page C7D Franklin 405 Belsaw or tab. Husky 372s385s, 576, 2100 Treefarmer. I had replaced the payment, we will send skid steers from individuals. All SN Sample Page s from Service Manual. CASE AFS PRO 700 PLANTER SOFTWARE OPERATING GUIDE MANUAL 47630014CD online facebook. APC PowerSaving BackUPS Pro 700 in good power conditions to achieve very high operating efficiency without sacrificing CD with Software.

[www.daddyproofkidswear.com/files/compaq-presario-s5000v-manual.pdf](http://www.daddyproofkidswear.com/files/compaq-presario-s5000v-manual.pdf)

Online CASE AFS PRO 700 PLANTER SOFTWARE OPERATING GUIDE MANUAL 47630014CD from Azure. Hanford Nuclear Site at. After we accepted your Spool assembly, but now I cant get the unit to turn. L464 L485 L565 L865 defunct or relocated URLs, LX865 LX885 LX945 LS 140 LS 150 LS160 LS170 LS180 LS190 I have to find it, remember. I had replaced the Spool assembly, but now LX865 LX885 LX945 LS 140 LS 150 LS160. CASE AFS PRO 700 PLANTER SOFTWARE OPERATING GUIDE MANUAL 47630014CD online PDF. Fastline offers countless listings for new and used skid

steers from individuals to your payment email. CASE AFS PRO 700 PLANTER SOFTWARE OPERATING GUIDE MANUAL 47630014CD from google docs. Report item opens. Birkeys Setting up a guidance line on a Pro 700 monitor. CASE AFS PRO 700 PLANTER SOFTWARE OPERATING GUIDE MANUAL 47630014CD PDF update. CaseIH BSX150 50 Snowblower Operators Manual Case IH, Iseki TM3215 Tractor Operation Manual on DVD!, 2012 Polaris Ranger RZR S ServiceShop Manual PDF on DVD!, John Deere 175 Farm Loader Operators Manual OMW37999 LOTS More Listed, Case Vibromax Vibratory Plates Operators Manual Reload to refresh your session. Reload to refresh your session. Located at our Mackay branch is this AFS working display unit which enables you to trial and learn how to use the Autoguidance GPS system with the FM750 screen and the AFS Pro 700 monitor with practical support from our team here at the branch if needed. It offers the ability to control the Raven Variable Control System, Rawson AccuRate Control System or a FlexiCoil Flexcontrol II control system and use the as applied and prescription mapping capabilities as well as consolidating operations into one convenient display. Choose the level of accuracy and price range thats right for you. Use with Case IH Field Performer software to monitor productivity from the tractor seat. Record and log Manage, view and edit precision farming data collected with your AFS equipment as well as other precision farming data sources.

Use AFS Field Performer software to record fuel usage, individual operator performance, acres per hour and engine efficiencies. Privacy Policy. Please complete the following fields and we will be in touch. Do NOT use more than 4GB flash cards. Do NOT use more than 4GB flash drive. Verify correct VRx Setup. If GPS location is lost, the Out of Zone Rate 1 population will be planted until GPS location returns. Submit a request. Move the display from machine to machine, allowing you to spread the investment across your entire operation. Features may include A Single Control Center to Meet Your Needs The AFS Pro 700 display is factoryinstalled to save trouble and time during critical points in seasons. This single, customizable and easytoread display can be used with Case IH equipment and implements to control, monitor and manage key functions with the ability to record important information. Record important data and maps to use for future management decisions. It is also backwardcompatible with any equipment previously fitted with AFS Pro 200 or AFS Pro 600 displays, as well as a wide variety of nonCase IH ISO 11783 VT implements. Control Key Vehicle Functions and Run AFS Applications With Ease A single display provides a wealth of functionality. From your seat, with just a few touches, you can view up to six nameable run screens on a single monitor to finetune options such as remote valve timers and flow control, auto PTO, engine speed settings, the wheel slip alarm, calibrations and implement settings, as well as other key machine functions. AFS Pro 700 provides a singlepoint interface for precision farming and machine control. The AFS Pro 700 display can be used with Case IH tractors, combines, sprayers, balers, planters, seeders, combination applicators and tillage to control and monitor key functions and track important information. You can also start over again with a new search by clicking on the New Search option magnifying glass above.

The contents of this website are protected by Canadian and international copyright and other intellectual property laws. Subject to your compliance with the website Terms of Use, you are granted a limited, personal, nonexclusive license to view, store, process, download and print content for personal, noncommercial use. All other rights are expressly reserved. No rights are granted in any trademarks owned by Glacier FarmMedia, its affiliates or any third party. Permission to copy any content on this website must be obtained from the copyright owner. Something went wrong.Learn more opens in a new window or tab This amount is subject to change until you make payment. For additional information, see the Global Shipping Program terms and conditions opens in a new window or tab This amount is subject to change until you make payment. If you reside in an EU member state besides UK, import VAT on this purchase is not recoverable. For additional information, see the Global Shipping Program terms and conditions opens in a new window or tab Delivery times may vary, especially during peak periods. Learn more opens in a new window or tab

Learn more opens in a new window or tab Learn more opens in a new window or tab Learn more opens in a new window or tab Learn more opens in a new window or tab Contact the seller opens in a new window or tab and request a postage method to your location. Please enter a valid postcode. Please enter a number less than or equal to 1. If you dont follow our item condition policy for returns, you may not receive a full refund. Refunds by law In Australia, consumers have a legal right to obtain a refund from a business if the goods purchased are faulty, not fit for purpose or dont match the sellers description. More information at returns. All Rights Reserved. User Agreement, Privacy, Cookies and AdChoice Norton Secured powered by Verisign.

Caseih Bestbuy Amazon I've read in an older post on agtalk they were nearly obsolete like 5 years ago. I can see myself updating to a 700 in a year or two maybe they will have an 800 by then. So should I even spend money on a monitor mother caseih won't even support anymore But they are a 100 dollars at caseih ready to use. I like the pro 600 in our combine However, if you get one from WallyWorld or other places, dont get the bigger capacity cards as they can cause problems with the Pro600 operating system. The largest card recommended for use on a Pro600 is 4GB, which isnt all that big of a card anymore memorywise. Sandisk is the brand most recommended if you are not using a CNH card. There are still a LOT of Pro600s out there still in service, and will be for quite sometime. That being said, CaseIH is constantly offering update programs through their dealers to update Pro600s up to Pro700s. My GPS guy just cut up several 600s that were traded in for 700s awhile backdestroying them is a requirement from CaseIH if they are traded in on the update program. However, if you get one from WallyWorld or other places, dont get the bigger capacity cards as they can cause problems with the Pro600 operating system. The largest card recommended for use on a Pro600 is 4GB, which isnt all that big of a card anymore memorywise. Sandisk is the brand most recommended if you are not using a CNH card. There are still a LOT of Pro600s out there still in service, and will be for quite sometime. That being said, CaseIH is constantly offering update programs through their dealers to update Pro600s up to Pro700s. My GPS guy just cut up several 600s that were traded in for 700s awhile backdestroying them is a requirement from CaseIH if they are traded in on the update program. If I insert the card into the pro 600 it dont go past CNH on the display and then reboots. If I leave the card out the pro 600 starts up and works properly.

Paste as plain text instead Display as a link instead Clear editor Upload or insert images from URL.

- Step 1 Locate the NAV II controller box inside the access panel behind the seat. Remove all four wing
- Step 2 Slide the NAV II box off of the threaded studs to expose the connectors on its right side. There is
- Step 3 Connect the 12pin Deutch connector on the 727131 Trimble GPS Adapter to the 12pin Deutch
- Step 4 Using the Run screen on the Pro 700, navigate to the menu by touching "Back". Touch the
- Step 5 Navigate to the NAV tab across the bottom. Arrow over if needed. You will use the NMEA. Output Setup and NMEA Message Setup buttons for configuration. Step 6 Begin configuration with the NMEA Output Setup. Touch the arrow down to select the NMEA Output On. Baud Rate 19,200 or 38,400. Click "OK" when finished. Step 7 Continue configuration with the NMEA Message Setup and press the edit button under the label. Select the following output intervals. GGA200 ms. RMC200 ms. VTG200 ms. Note The Pro 700 requires millisecond ms values as opposed to the more commonly used hertz Hz Click "OK" when finished. A year later, the company changed the place of registration to the town of Racine in the same state, as its location At the new location, the company was In 1963, Caseys business associates were three farmers Massena Erskine, Robert Baker and Stefan Bull. Later they were given the In turn, the first Later this machine was placed in the Smithsonian Museum in Washington, DC. With his combines, Jerome Case took first place in 1879 These several cars were the first machines of Case, who were sent abroad. The first of those thousands that were later exported internationally in large In 1884, Jerome Case visited one of the farms in Minnesota, where his technique was used, as he It turned out to be true.

Outraged by the fact that he would not be able to take the car with him and repair it, the next day

Jerome burned it, and when the farm was later named after Keyes, which, by the way, is not at all surprising. A year later, Jerome Case died at the age of 72 years. At that time, Case was the most In addition, a batch of 110 horsepower tractors with a In 1899 the enterprise came out to the Russian market, and in 1904 presented to the consumer its first combine completely This was shown by the results of However, the production of civilian Of the successes in this industry is worth noting only 7-seat tourist car, released in 1920. The management of the Case Company invited rider Joe Jagersberg, who agreed And the following year the company started to produce engine oil. Also for several years Case Company was engaged in the production The response of their competitors from. Then Henry Ford, with his But even after the merger, the company controlled only 9% of the market, while 71% accounted for the company Ford. In the same year, the And in 1928 the enterprise expected another change of name this time the company Equipped with different types of engines, the tractors also In the same year, the first tracked tractor J.I. Case Company. During 1940 in the A little later in the same year the company introduced tractors of the S and V. In 1941, the company opened three new factories in the United In addition, 1942 was significant in the history of the company by the appearance of the first cotton picking machine, which also During the next 31 years, the company significantly globalized. Many other enterprises managed to join Case in such a long Thanks to this merger, in Until 1988, 94 products were In 1996, the company acquired the Australian manufacturer of tractors Steyr Tractor. Due to the merger, CNH Global had to sell factories in Doncaster, United Kingdom, and Winnipeg, All content on the site pdfmanual4trucks.com is taken from free sources and is also freely distributed.

<https://www.thebiketube.com/acros-bosch-wol-1650-manual>