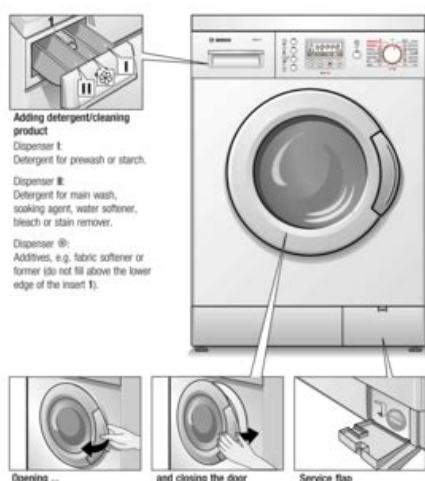


Introducing your washer-dryer



7

File Name: bosch washing machine owner s manual.pdf

Size: 4005 KB

Type: PDF, ePub, eBook

Category: Book

Uploaded: 21 May 2019, 17:56 PM

Rating: 4.6/5 from 596 votes.

Status: AVAILABLE

Last checked: 7 Minutes ago!

In order to read or download bosch washing machine owner s manual ebook, you need to create a FREE account.

[**Download Now!**](#)

eBook includes PDF, ePub and Kindle version

[Register a free 1 month Trial Account.](#)

[Download as many books as you like \(Personal use\)](#)

[Cancel the membership at any time if not satisfied.](#)

[Join Over 80000 Happy Readers](#)

Book Descriptions:

We have made it easy for you to find a PDF Ebooks without any digging. And by having access to our ebooks online or by storing it on your computer, you have convenient answers with bosch washing machine owner s manual . To get started finding bosch washing machine owner s manual , you are right to find our website which has a comprehensive collection of manuals listed.

Our library is the biggest of these that have literally hundreds of thousands of different products represented.



Book Descriptions:

bosch washing machine owner s manual

This washing machine A call setup fee of up to 6 pence may Comparable cleaning result with Take care not to trap items of laundry Pour the starch in Salt may damage stainless steel. Do not use the washing machine for Close the washing machine door.If foam is escaping from the detergent drawer 4. Turn the programme selector to Off. Disconnect the mains plug. Electricity Leave the washing machine door open so that the drum can dry out.Drum Not required for AquaStop models Hinweise Close the washing machine door. Take care not to trap items of laundry Installation Instructions, page 7. between the washing machine door and the rubber seal. Control panel. Salt may damage stainless steel. Always follow the dye manufacturers instructions. Do not use the washing machine for bleaching clothes! Disconnect the mains plug. Leave the washing machine door open so that the drum can dry out. Rust stains use chlorinefree cleaning agent, not steel wool. 5. Clean the filter. SpeedPerfect perfectly clean in up to 65% less time.Gentle with your clothes and gentle on your skin. 18 kg load dries up to 8 kg of laundry.Enjoy your coffee with a pure coffee taste directly after serving a delicious hot chocolate for your children.Download user manual Washer dryer Bosch WVH28424GB in PDF format WVH28424GB AirCondensation Technology for extremely waterefficient drying through air condensation. Refresh for creasefree, refreshed laundry.Your TASSIMO makes it so easy, and with little effort required, to prepare a variety of delicious hot drinks.Easy operation with LEDDisplay and convenient control dial.With Home Connect, you can stay in control of your washing machine from anywhere using our smartphone or PC tablet app.Noise Level pleasantly quiet at 65 dB. Drainset no need to empty condensation water manually as it is automatically drained.Consumption indication easy operation and indication of energy and water consumption.<http://www.clicksoccer.net/files/fckeditor/composer-pro-mdx2200-manual-espa-ol.xml>

- **bosch washing machine user manual, bosch washing machine owners manual, bosch washing machine user manual pdf, bosch washing machine user manual logixx 8, bosch washing machine owner s manual.**

Easy cooking with a just a button click 50 preset programmes allow for a wide range of dishes to virtually prepare themselves.WaveDrum gentle washing thanks to a unique drum structure.Powered by WordPress.org, Opravy rucniho naradi Smecno. Please note that depending on the settings you choose, the full functionality of the website may no longer be available. These cookies don't collect information that identifies a visitor. All information these cookies collect is aggregated and therefore anonymous. It is only used to improve how a website works. They are usually placed by advertising networks with the website operator's permission. They remember that you have visited a website and this information is shared with other organisations such as advertisers. Unfortunately we do not have control over these cookies, in this case you should refer to the list of cookies on this page which provides further details. To find the model number ENr, check the rating plate of your appliance. Use the rating plate finder below to see where it is located on your appliance. If you have registered your Bosch appliance online, you can also log into your online account and select this appliance to access its instruction manual, additional documentation, specifications and further support. Please check the uploaded file format. Only PNG and JPG are allowed. Please try again or type the model number ENr in manually. Use the rating plate finder below. Browse our full range below. Instruction manuals contain essential information to operate and maintain your appliance. Buy genuine spare parts direct from Bosch. Registration number 01844007 England and Wales VAT registered number GB108311845. With Boschs instruction manuals. Simply enter the ENR model type number from

your appliance and will take you to the available publications. Just use the type plate finder to get assistance. Just click on the link below to get assistance. <http://www.monitoringnavstevnosti.cz/userfiles/composer-pro-mdx-2200-manual-espa-ol.xml>

Your registration with MyBosch comes with a whole range of offers committed to make your Bosch experience even better, such as exclusive offers and infotainment. You need these for product registration and booking your repair service. And by having access to our ebooks online or by storing it on your computer, you have convenient answers with Bosch Washing Machine Manual. To get started finding Bosch Washing Machine Manual, you are right to find our website which has a comprehensive collection of manuals listed. Our library is the biggest of these that have literally hundreds of thousands of different products represented. I get my most wanted eBook Many thanks If there is a survey it only takes 5 minutes, try any survey which works for you. Congratulations on your selection of a new Bosch washer Important information. 4 Operating Instructions. 22. Purchase information. 4 Before doing any laundry. Page 4 Important information. Purchase information Customer service. Please take a moment to record the following basic Your washer does not require. Page 5 Your washing machine is intended for The washer can be operated. Page 6 9 IMPORTANT SAFETY INSTRUCTIONS Save energy and detergent when washing lightly and Your new. Page 9 Clearance requirements Minimum Under counter Preferred. A Both Sides 0.6 in. 1.5 cm. B Top 6.3 in. 16 cm. C. Page 10 Installation instructions Back side of the washing machine P Cold water connection Page 14 Wash Basin 5. Press down on each corner of the washer top to make This appliance must be grounded. In the event of Before transporting the washer Control panel Preparing the laundry Determining degree of soiling. Light soiling. Foreign objects e.g. coins,. Page 18 Laundry detergents and additives. Adding the correct amount of HE detergent. Detergent for woollens Cycles max. selectable cycle settings, Type of laundry additional cycle settings; Page 20 Cycles max.

selectable cycle settings, Type of laundry additional cycle settings; At the factory, a temperature range, spin speed range, Delay Start. Page 22 Operating Instructions Page 23 Recommended Load Size Filling. Recommended maximum load size can be found If at the end of the cycle the display. Page 26 Cleaning and maintenance. Your washer is designed to give you many years of Cleaning the detergent dispenser Emergency door lock release. In the event of a power interruption the program will Page 30 Determining the Problem. Problem Possible causes Solutions. Washer door cannot be Child lock is activated. Deactivated Child lock press and. Page 31 Problem Possible causes Solutions. Water cannot be seen The water level in your high effi No action needed. Display Fault Measure. E16 Door not closed properly. Check to be sure no laundry is caught in the. Page 33 STATEMENT OF LIMITED PRODUCT WARRANTY. Bosch Clothes Washer Product proves to have been manufactured with a defect Bosch will repair or replace, free of charge any motor. Washing machine WAW28460AU en Instruction manual and Installation Instructions Your new washing machine You have chosen a Bosch washing machine. Please take a few minutes to read and become familiar with the advantages of your washing machine. To meet the high quality demands required by Bosch, every washing machine that leaves our factory is carefully checked to ensure that it functions correctly and is in perfect condition. If the operating and installation instructions describe different models, any differences will be pointed out at the relevant points in the text. Newest Added WAW28420AU WAW28790AU WAW28620AU WAW28640AU WAY32891AU Read these operating and installation instructions before switching on the washing machine. Display rules Warning. This combination of symbol and signal word indicates a possibly dangerous situation. Not heeding the warning can cause death or injuries. This signal word indicates a possibly dangerous situation.

<http://fscl.ru/content/3g3mv-inverter-manual>

Lists are represented by a small box or a dash. The enhanced insulation also regulates noise levels,

making Bosch washing machines very quiet, even during the spin cycle. With the two automatic programmes for hardwearing or sensitive washing, the washing machine deals with the rest all on its own. The washing process is ideally adjusted to the needs of your laundry. Our ActiveWater Plus technology delivers perfect results while only using as much water as needed. Built-in sensors adjust the water consumption according to the fabric type and the automatically detected load, while our patented drum and water induction systems allow for faster soaking. Choose the wash that helps you manage your water usage and delivers all-round peace of mind at home. Ask your question here. Provide a clear and comprehensive description of the issue and your question. The more detail you provide for your issue and question, the easier it will be for other Bosch Serie 4 WAN20067IT owners to properly answer your question. Ask a question Can I select spin only with the max speed. Also is it possible to save your favorite setting This manual comes under the category Washing Machines and has been rated by 42 people with an average of a 7.7. This manual is available in the following languages English. Do you have a question about the Bosch Serie 4 WAN20067IT or do you need help. Ask your question here Bosch Serie 4 WAN20067IT specifications Brand Scale deposits can be prevented by limiting washing at high temperatures and using the recommended amount of detergent per wash. ManualSearcher.com ensures that you will find the manual you are looking for in no time. Our database contains more than 1 million PDF manuals from more than 10,000 brands. Every day we add the latest manuals so that you will always find the product you are looking for. It's very simple just type the brand name and the type of product in the search bar and you can instantly view the manual of your choice online for free.

<https://findatree.com/images/canon-super-g3-mf4150-manual.pdf>

ManualSearcher.com If you continue to use this site we will assume that you are happy with it. Read more Ok. Please note that depending on the settings you choose, the full functionality of the website may no longer be available. To find the model number ENr, check the rating plate of your appliance. Use the rating plate finder below to see where it is located on your appliance. Please enter your email address and password below to log in. Instruction manuals contain essential information to operate and maintain your appliance. Buy genuine spare parts direct from Bosch. Create a personal account on the Bosch registration page. To find the right user manual, simply enter the part number of your tool located on the nameplate.

<https://www.flexcable.com/images/canon-super-g3-manual-faxphone-l80.pdf>

<lakecountyoralsurgery.com/wp-content/plugins/formcraft/file-upload/server/content/files/1626c783d69910---a-manual-of-acupuncture-peter-deadman.pdf>

<https://formations.fondationmironroyer.com/en/node/8021>